

LNOT Teamspeak Whisper Lists

In order to organize communications, it is essential to build specific whisper lists for TS3.

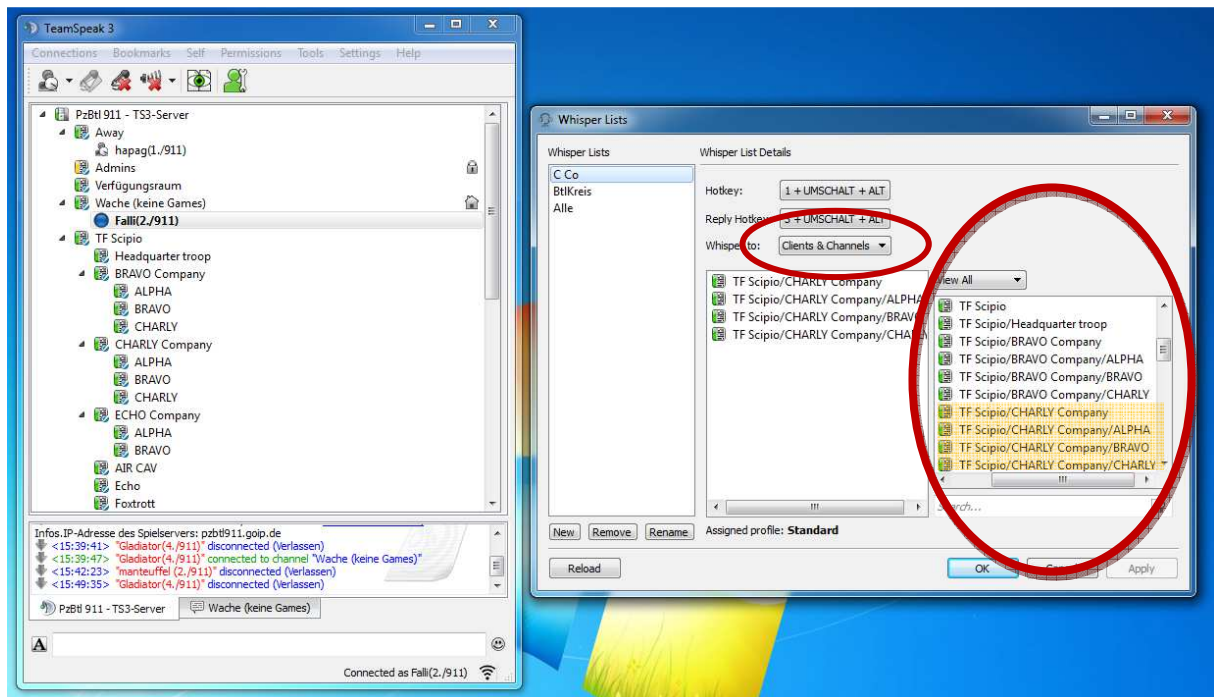
TS3-server was prepared and several sub-channels lists were already established.

It represents the command structure for TF SCIPIO, with platoon, company and HS/battalion level.

PLATOON: For normal comms within a platoon, a unique whisper list isn't necessary.

COMPANY/TROOP: In order to communicate within a company/troop, a first whisper list has to be prepared. Everyone in the company, from CO to every crewman will get those messages then. Below you can see the example for the CHARLY Company. It includes every platoon subchannel and the staff channel.

Therefore, choose "Whisper to" *Clients & Channels* and choose the appropriate (sub-)channels in the right window and double-click to add them to the whisper list's settings.



BATTALION/STAFF/SUPPORT: The same procedure as above is necessary to make a whisper list for the commanding and support elements of TF SCIPIO. With this list only COs, XO, staff and HS units can communicate, the platoon or crewmen level will not receive any messages.

Therefore, also choose “Whisper to” *Clients & Channels* and choose the appropriate commanding channels in the right window and double-click to add them to the whisper list’s settings.

